

# Quadex® High-Performance Grouts

## I & I Guard® -AG

Acrylamide Grout

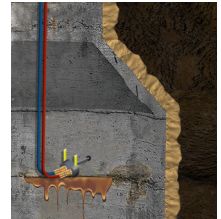
**FOR SOIL STABILIZATION & SEALING**

### DESCRIPTION

A dry powder that readily dissolves in water to produce a low viscosity grout solution. When the catalyst is added to the grout mixture, its viscosity and soil penetration are similar to water. When injected into soil and cured, it binds the soil particles together and forms a stiff, impermeable gel thereby controlling the flow of groundwater.

### APPLICATION INFORMATION

I & I Guard®-AG is an excellent choice for infiltration control, sealing of pipeline joints, laterals, manholes, and vaults. It also promotes soil stabilization.



## I & I Guard® -PRF

Fast Curing  
Foam Grout

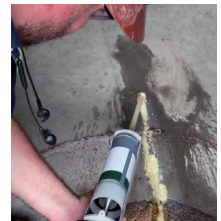
**FOR HIGH FLOW LEAKAGE**

### DESCRIPTION

A non-shrinking, two-part polyurethane grout used to stop high flow infiltration. Easy injection method creating curtain of grout on the outside of underground structures. Super-fast cure allows for immediate reduction in infiltration.

### APPLICATION INFORMATION

Stops leaks in manholes, vaults, lift stations, pipelines, etc. Can be used to stop leaks up to 50 gallons per minute. Used primarily to stop high inflow and infiltration.



## I & I Guard® -SCF 200

Single Component  
Foam Grout

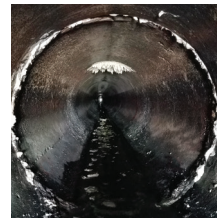
**LEAK STOPPAGE & CRACK SEALING**

### DESCRIPTION

A single component, moisture-activated and MDI/TDI blended polyurethane injection grout designed for sealing persistent water leaks from large cracks or leaking joints in concrete structures. Absorbs up to 12x its weight in water. Foam consistency, 1:1 water ratio. Gel consistency, 10:1 water ratio.

### APPLICATION INFORMATION

Recommended for active, high-volume water flow, where large cracks, voids or joints in concrete structures, must be sealed. Effective solution to stabilize moving cracks and joints caused by freeze/thaw conditions and other forms of external pressure.



## I & I Guard® -MSF

Migration Foam  
Grout

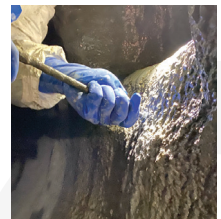
**STABILIZATION & LEAK STOPPAGE**

### DESCRIPTION

A low viscosity, high density, deep penetrating, polyurethane injection resin that stops infiltration and stabilizes soil as it expands while creating a solid, water-tight barrier. I & I Guard-MSF works best in low flow situations. With a slower reaction time, it can migrate further into the void.

### APPLICATION INFORMATION

Voids between walls, floors and ceilings, expansion and barrel joints, cracked concrete, pipe intrusion and annular space.



## I & I Guard® -SSF

Soil Stabilization  
Foam Grout

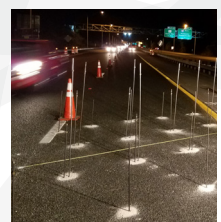
**STABILIZATION & LEVELING**

### DESCRIPTION

A high density, high strength, structural two-part polyurethane grout. This closed cell polyurethane's low viscosity and hydro insensitive nature allows for the permeation and filling of voids, undersealing of concrete, and stabilizing of soil, while also mitigating inflow and infiltration.

### APPLICATION INFORMATION

Soil stabilization, releveling concrete slabs, filling voids, sinkhole remediation, and other various types of geotechnical grouting.



# Choose from Several Equipment Options



Equipment options are available to efficiently and effectively apply Quadex® polyurethane grouts designed to quickly stop inflow and infiltration, fill large voids, permanently seal cracks, and stabilize soil around and beneath infrastructure and roadways.



## Quadex OneGun®

### BATTERY OPERATED CARTRIDGE GUN

**For Use With I & I Guard®-PRF and SCF**  
*Cartridge Delivered Equipment*

#### Best Used In:

Confined spaces, remote locations,  
concentrated applications

#### DESCRIPTION

This extremely powerful and ultra-portable battery-operated cartridge gun is the perfect solution for applying the Quadex® line of dual component repair materials. Quadex OneGun® is systematically designed to deploy the Quadex line of cartridge repair materials, whether in "1 to 1" or "2 to 1" ratios. OneGun's 20 Volt lithium-ion battery will deliver up to three hours of continuous power in the most extreme conditions.



## Graco Ultra Max II 490 PC

### ELECTRIC AIRLESS SPRAYER

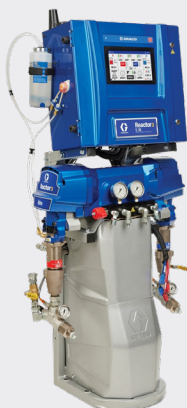
**For Use With I & I Guard®-SCF and MSF**  
*Spray Application Equipment*

#### Best Used In:

Areas requiring larger volume, continuous  
application

#### DESCRIPTION

Increased productivity and unmatched reliability, Graco's Mid-size electric airless sprayer features a brushless motor and Chromex piston pump and for more torque and longer life. Due to the harsh environments the 490 PC must work in, it has been designed for low maintenance and high productivity.



## Graco Reactor 3 E-30

### SPRAY FOAM PROPORTIONER SYSTEM

**For Use With I & I Guard®-SSF**  
*Foam Application Equipment*

#### Best Used In:

Soil stabilization applications beneath  
roads and walkways, and filling voids  
below and behind infrastructure

#### DESCRIPTION

The Reactor 3 E-30 is a spray foam system is ideal for both residential and commercial spray foam work. The E-30 balances output, heat, and is designed to communicate with the entire system to optimize spray parameters and maximize productivity.