

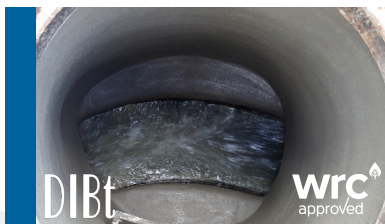
# Advanced Coating, Lining and Construction Materials

For critical infrastructure repairs

Founded in 1991, Quadex® LLC is one of **the industry's most respected formulators and manufacturers** of protective coatings, linings and repair materials. Our staff is dedicated to providing high performance products to repair and rehabilitate aging, damaged or structurally compromised raw/potable water, sewer, storm and industrial infrastructure. To **ensure maximum quality and performance**, Quadex materials are field tested in rigorous conditions and third-party laboratory tested to ensure compliance with complex design engineering.

## GEOPOLYMERS

Certified as a reduced carbon footprint product, GeoKrete® Geopolymer is a fully structural, corrosion resistant lining material developed for large diameter pipes, culverts, tunnels and manhole structures. Resistant to corrosion, especially in low pH environments.



## HYBRID CEMENTS

Fully structural and corrosion resistant products used for a wide range of infrastructure rehabilitation such as manholes and vertical structures, etc.



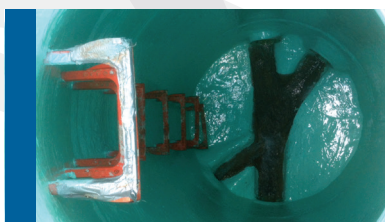
## PATCHING MATERIALS

Choose from several polymeric and hybrid cement-based materials to fill voids, stop leaks or rebuild benches in structures exceeding their design life and suffering from severe corrosion and degradation.



## POLYMERIC MATERIALS

A complete line of 100% solids and hybrid epoxies to address highly corrosive environments such as wet wells and settlement tanks found in water, sewer and industrial infrastructure.



## POLYURETHANE GROUTS

For leak stoppage and soil stabilisation, polyurethane grouts are designed to offer a broad range of densities, viscosities and set-times.



## APPLICATION TOOLS

From large scale application equipment rigs to the portable hand-held Quadex OneGun®, these tools are specifically designed with QA/QC in mind.



# Where to use our products for manholes, pipes, culverts, wet wells and more.



Quadex® Repair Materials are designed to work with each other and perform at a high level in a variety of applications.



**REPAIR MATERIALS**

## EXTREME CORROSION PROTECTION AND FULL STRUCTURAL LINING CAPABILITY

Structure Guard® is a 100% solids epoxy lining system. Extremely corrosion resistant and contains no VOCs, it is typically used for protective lining or as a top coat to structural lining materials such as Aluminaliner® or QM-1s Restore®. It can also be designed as a fully structural liner in certain conditions.

## CURTAIN GROUT AND SOIL STABILISATION

Injected at the leak source, I & I Guard®-SSF polyurethane foam grouts are designed with a wide range of densities to fill deep voids and address I & I threatening eminent sinkhole conditions.

## MAJOR DEFECTS

When age and deterioration leads to cracks, defects, deterioration and leaks, Hyperform® is a single component, rapid-setting, high early strength patching mortar.

## LEAKING INVERTS AND LATERALS

I & I Guard®-PRF dual component hydrophobic polyurethane, with a 1-3 second reaction time. Perfect for running/gushing leaks, up to 50 GPM (189 LPM).

## CHIMNEY/CONE SEALING

Freeze/thaw conditions ultimately lead to expansion and contraction, a common cause of leaks in manhole chimneys. Chimney Guard™ is a hybrid epoxy urea coating. It is ready to use, does not require a primer and offers 270% elongation to prevent this very common situation.

## PERSISTENT WATER SEEPAGE

I & I Guard®-SCF is a deep penetrating, single component, closed cell, pre-catalyzed, hydrophobic grout. Works best where leaks are slow, allowing the foam to reach and set deeper behind the crack.

## LOW FLOW LEAKS

Quad-Plug® is a blend of hybrid cements and admixtures. It was developed to instantly stop water seepage, up to 5 GPM (19 LPM), in concrete and masonry structures.

## FULL STRUCTURAL RENEWAL AND CORROSION PROTECTION

GeoKrete® Geopolymer is recommended when a fully structural, corrosion resistant lining is necessary to restore the manhole structure.

## DETERIORATED BENCHES

Hyperform® is a perfect solution for bench rebuilding. It can be easily shaped and sets up quickly.